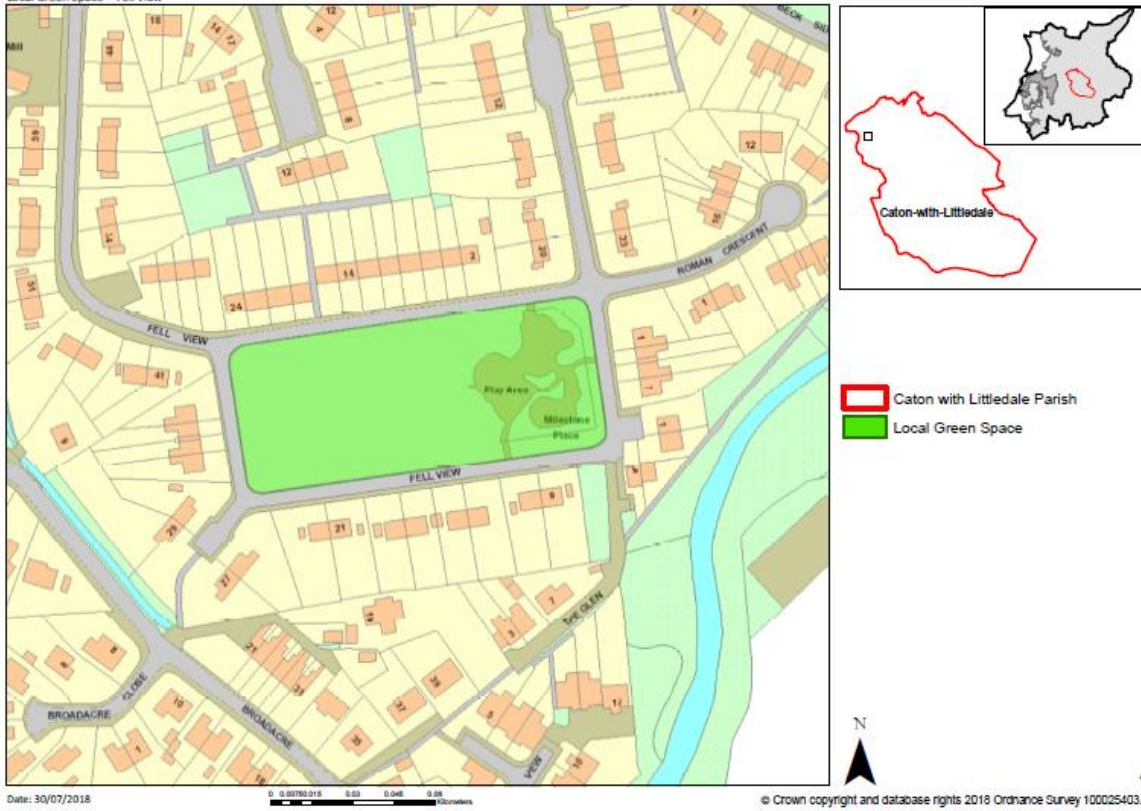


LOCAL GREEN SPACE DESIGNATION: FELL VIEW GREEN

Fell View Green

Local Green Space – Fell View



Aerial image



The aerial view shows the integration of the play park on the right, with the aerial runway stretching towards the centre top and the well-worn informal grassed area of the green as a whole,

with the football goal provided by the Parish Council; the corner areas of trees and undergrowth, and the trees planted or growing around the play park.

Dimensions

Grid ref 531644. Area Hectares 0.722 acres 1.785. Perimeter 0.37km 0.23 miles

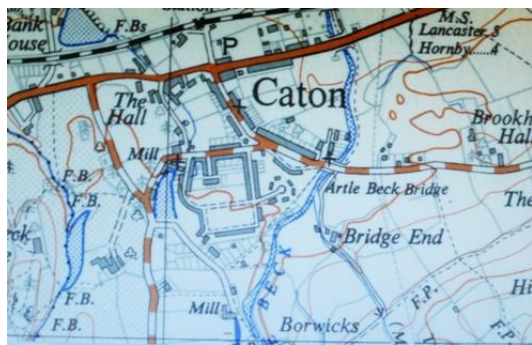
Fell View Green is local in character, not an extensive tract of land

It is in very close proximity to the community it serves

At the centre of Caton and within walking distance from Brookhouse (from a few hundred metres to half a mile)

Location and boundaries

The rectangular green area is surrounded on all sides by the road which runs around Fell View with all houses facing onto the green. Access to Fell View for traffic is from Copy Lane with two feeder roads. The road serves only Fell View, Milston place which lies back from it at the east side, with two short cul de sacs to the east and to the west with a footpath leading onto Broadacre. Another track leads to the Glen, the Parish Woodland, and a footpath to Brookhouse Road, and to a further footpath to Broadacre. It is a very safe place for children living around Fell View to play.



A 1932 OS map shows open fields where Fell View now is; by 1952 there was a dotted line where it would be.

Fell View is first as a green in a housing estate, as shown on an OS map dated 1952 as the present rectangle of open space surrounded by the estate, a post second world war council house development.

Ownership and maintenance

The whole green is owned by Lancaster District Council and leased to Caton with Littledale Parish Council on a long term lease with peppercorn rent. The Parish Council maintains the upkeep of the grass, which is regularly mowed; the trees and shrubs; the goalpost. A playground has been there from the earliest days of the council estate at the eastern end of the rectangle, featuring typical of the time. The Parish Council maintains the play area.

Playground / Play Park (part of the green)

During the 1970's and the two subsequent decades, renewal of equipment was slow and complaints about inadequate facilities grew, and in particular the lack of play area for toddlers. Following the establishment of a separate charity, Caton with Littledale Play Park Action Group, external grant funding enabled a designer led, landscaped and comprehensively equipped new play park to be built, catering for ages 0-14 years, opened in 2011.



Land already designated: If land is already protected consideration should be given to whether any additional local benefit would be gained from Local Green Space designation.

Fell View green

Additional evidence establishes why the whole green should be designated as a Local Green Space.

The 'green' has always been highly valued by local residents as an open space where children could play informally and safely. Fell view green as a whole now hosts several community events for people of all ages, especially for families and children, throughout the year. Designation as local green space is sought on two bases:

- a) the demonstrably special value to the community of the open area of the 'green'
- b) the inseparability and complementarity of the equipped play area and the open green space in how they are used and regarded by local residents.

For supportive detail see below in....

Evidence that Fell View Green is demonstrably special for the local community.

Evidence of Fell View Green's value to and use by the local community to show the land holds a particular local significance

Recreational activities

The green has always been used for informal play for local children, integrally with the formally designed play park for children aged up to 14 years, and catering for leisure activities for all ages.

In response to demand, and almost continual use for informal football, the Parish Council put a goal at the western end. This has already been replaced once, and the well worn area around it testify to the heavy use. Local children also play cricket and rounders there.



The green has also been in use by village groups, such as the Methodist church youth groups, for team activities and coaching.

Since the new play park was opened, revenue grant funding from several sources and linked to the play park facilities has supported a wide range of community activities on the open green space, enabling participation by parents, carers and friends. Following the installation of the present play park, grant funding, first from the National Lottery, and since from the Co-op community grants have funded a series of successful organised events on the green, linked to play on the park. These have included:

- ❖ Family team games (several occasions) with refreshments
- ❖ Family rounders
- ❖ Traditional sports and games with refreshments
- ❖ Sports coaching
- ❖ Hog roast
- ❖ Firework display
- ❖ Outdoor bouncy event





A further Co-op grant will enable these community activities to continue.

All have been very well attended social events as well as encouraging families to be active and make full use of the play park.

Grant funding has also provided a stout weatherproof gazebo for wet weather cover on the green, and a variety of small sports equipment for use in future events.

Informal play, den making and tree climbing for younger children living nearby:

At both western corners there are small trees and shrubs, slightly overgrown, which the Parish Council maintains as requested by local people. These small dense areas provide much used climbing trees and den making. Because they are a road width from the houses surrounding the green, there is informal supervision, and these areas are deemed 'safe'. Each contains a variety of undergrowth and provides a satisfyingly challenging 'thicket' for play.



Types of Tree

Ash
Beech
Bramble
Cotoneaster
Elder
Hawthorn
Ivy
Nettles
Oak
Redcurrant
Rowan
spruce
Sycamore
Wild rose

Survey of residents - a sense of community ownership and participation

The consultation survey for the new play park, which documented responses from almost every resident living in the perimeter houses, provided much information about the uses of Fell View 'green' as it is known, and the enjoyment and feelings of belonging associated with it for local residents of all ages.

It demonstrated that the green plays a strong positive role in creating a feeling of belonging to this community. Many residents expressed how much they enjoyed watching children play on the green and how valuable is the much used space for informal football - and cricket - for local children. One elderly man, who was housebound, said how delighted he was that the zip wire of the new play park would pass by his window so he could see children enjoying it. A number of residents also felt responsible for keeping an eye open to ensure children are safe when playing both on the green and the play park.

Community involvement activities

Since the play park was built, the local sense of ownership has been strong. We know that several residents make sure it is free of litter. Individuals make suggestions for improvements to Fell View to the Parish Council. Children also watch for signs of wear and tear or other damage and report this.

Three ornamental trees were planted before the present play park was built, and fruit and deciduous trees were planted as part of the play park. A grant funded training event taught care of the trees planted in and around the Play park.



The Parish Council provided a small grant in response to a community request plant spring bulbs in the perimeter grass at one end.



Contribution to community sustainability

Fell View, Caton Community School Field, and Station Field each provide:

- ❖ very local accessible green space, at the heart of a residential estate or historical building cluster within Caton, to which young and older children can walk safely and very close to home for informal play along a footpath, pavement, track, and away from main traffic routes.

- ❖ large enough 'field' areas of mowed grass to encourage a wide variety of informal games and other activities to be enjoyed by children with their friends, and with their families, and for residents to exercise their dogs.
- ❖ a row of houses on at least two sides, from which local people say they can 'keep an eye' on activities in the green space, to ensure safety.
- ❖ a social place for all local people to meet on a day to day, casual basis strengthening feelings of being part of the local community.

Almost all Caton families are immediately served by one of these local green spaces. Brookhouse is accessible on foot from between a few hundred metres to half a mile away.

One of the basic conditions for neighbourhood plans is achieving sustainable development. The social, community, economic and environmental benefits of green spaces help to make local places sustainable. From Locality toolkit